

**ITEM 19. ITEM FOR COMMITTEE INFORMATION – TRAFFIC TREATMENT –
ELIZABETH STREET FROM LIVERPOOL STREET TO BATHURST
STREET SYDNEY**

TRIM RECORD NO: 2014/563813

RECOMMENDATION

It is recommended that the Committee note the following:

- (A) Reallocation of kerb space on the western side of Elizabeth Street between the points 5.3 metres and 18.6 metres north of Liverpool Street as “No Stopping Australia Post Vehicles Excepted”;
- (B) Reallocation of kerb space on the western side of Elizabeth Street between the points 18.6 metres and 77.6 metres north of Liverpool Street as “No Stopping 6am-10am, 3pm-8pm Mon-Fri”, “Loading Zone Ticket 10am-3pm Mon-Fri, 6am-10am Sat” and “4P Ticket 8pm-12am Mon-Fri, 10am-10pm Sat, 8am-10pm Sun & Public Holidays”;
- (C) Reallocation of kerb space on the western side of Elizabeth Street between the points 77.6 metres and 97.8 metres north of Liverpool Street as “No Stopping 6am-10am, 3pm-8pm Mon-Fri”, “No Parking At Other Times”;
- (D) Reallocation of kerb space on the western side of Elizabeth Street between the points 97.8 metres and 159.3 metres south of Park Street as “No Stopping 6am-10am, 3pm-8pm Mon-Fri”, “Loading Zone Ticket 10am-3pm Mon-Fri, 6am-10am Sat” and “4P Ticket 8pm-12am Mon-Fri, 10am-10pm Sat, 8am-10pm Sun & Public Holidays”;
- (E) Reallocation of kerb space on the eastern side of Elizabeth Street between the points 245.2 metres and 328.5 metres south of Park Street as “No Stopping 6am-8pm Mon-Fri, 10am-6pm Sat, Sun & Public Holidays”, and “4P Ticket 6am-10am Sat Sun & Public Holidays”;
- (F) Installation of kerb amendments and changes to lane configuration in Elizabeth Street between Liverpool and Bathurst Streets to provide for the installation of the bus lanes.

DECISION

BACKGROUND

On 19 December 2013, the NSW Government adopted the Sydney City Centre Access Strategy (Access Strategy). The Access Strategy will deliver a fully integrated transport network in Sydney’s City Centre that puts the customer first and meets the growing transport task. It will mean more people use public transport to access the City Centre and it will change the way people move around within it.

The Access Strategy considers all transport modes and demonstrates how light rail, buses, trains, ferries, cars, taxis, pedestrians and cyclists will interact in the heart of Sydney. The Access Strategy also provides a clear direction for how all the different transport modes will work together in the Sydney CBD to reduce congestion, provide for future growth and improve the customer experience.

The Sydney City Centre Bus Plan (SCCBP) forms part of a suite of transport improvements associated with the Access Strategy and includes:

- New dedicated Bus Lanes, Bus Stops and shelters;
- Modifying kerbs and footpaths, line markings and medians; and
- Removing and relocating some taxi ranks, Loading Zones and on-street parking spaces.

The SCCBP aims to:

- Provide a more efficient bus network that is easier for customers to use and understand;
- Create bus corridors within the CBD that improve links to key destinations and improve connectivity with other transport modes; and
- Relocate existing bus routes on George Street to enable delivery of the CBD Light Rail.

The SCCBP will be delivered by Roads and Maritime Services (RMS), in conjunction with Transport for New South Wales (TfNSW) and the City of Sydney.

COMMENTS

The kerb space on the western side of Elizabeth Street between Liverpool and Bathurst Streets is generally signposted as "Bus Zone". A Bus Lane currently operates on the western side of Elizabeth Street between 8am-10am, 3pm-6pm Mon-Fri.

Elizabeth Street between Liverpool and Bathurst Streets is identified in the Access Strategy as a key bus corridor. The bus corridor includes "No Stopping", "Bus Zone" and "Bus Lane 6am-8pm Mon-Fri 10am-6pm Sat".

Where possible, loading, taxi and parking for people with disabilities will be distributed to neighbouring streets, contained within the proposed changes for the bus and cycleway plans.

Agreement was obtained from the RMS, the Sydney City Police and the State Member, for the proposed changes.

CONSULTATION

The RMS publically exhibited the Review of Environmental Factors (REF) from 23 June to 25 July 2014. Notification of the REF included a letterbox drop to 36,000 properties, a dedicated website, a drop-in centre and visits and meetings with 200 stakeholders within the affected area.

Of the 36,000 letters distributed, the RMS received 60 submissions. Of these 17 supported the proposal, 31 opposed the proposal and 12 were neutral.

Submissions opposing the proposal were concerned about the loss of loading and parking spaces, increased noise and impact to business.

Submissions supporting the proposal believed the proposal would improve public transport access to the City and reduce general traffic congestion.

Included in the consultation process, meetings were held with individual stakeholders who raised concerns about the proposals. The proposal was amended based on these concerns to better meet the needs of the community within the allowable scope of the project objectives.

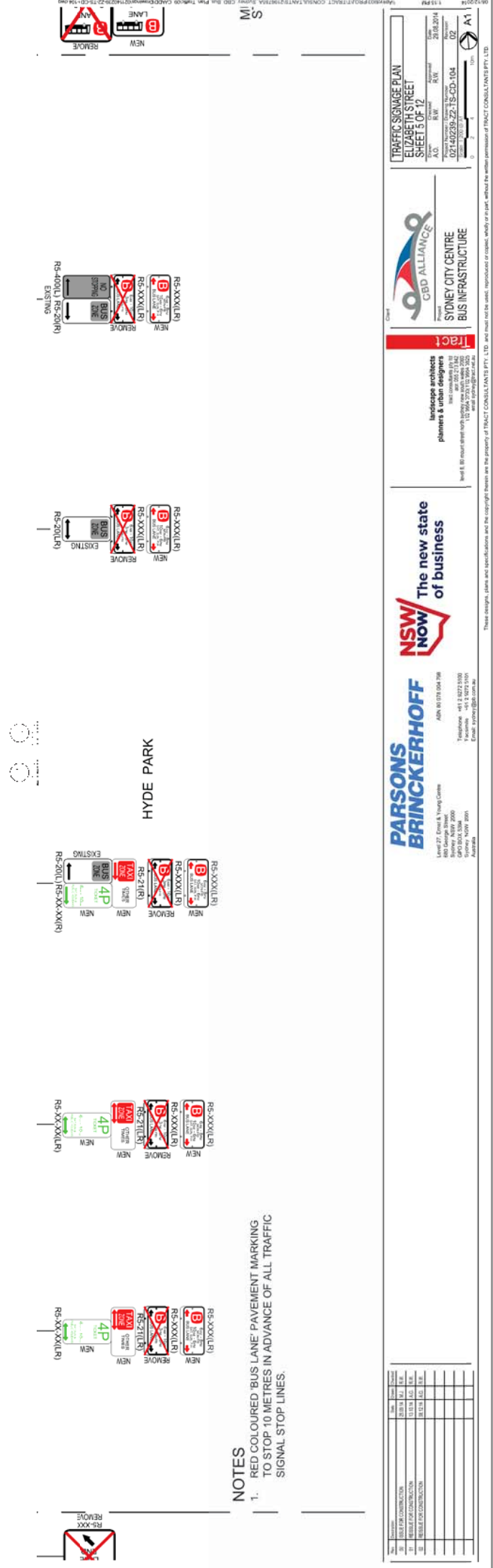
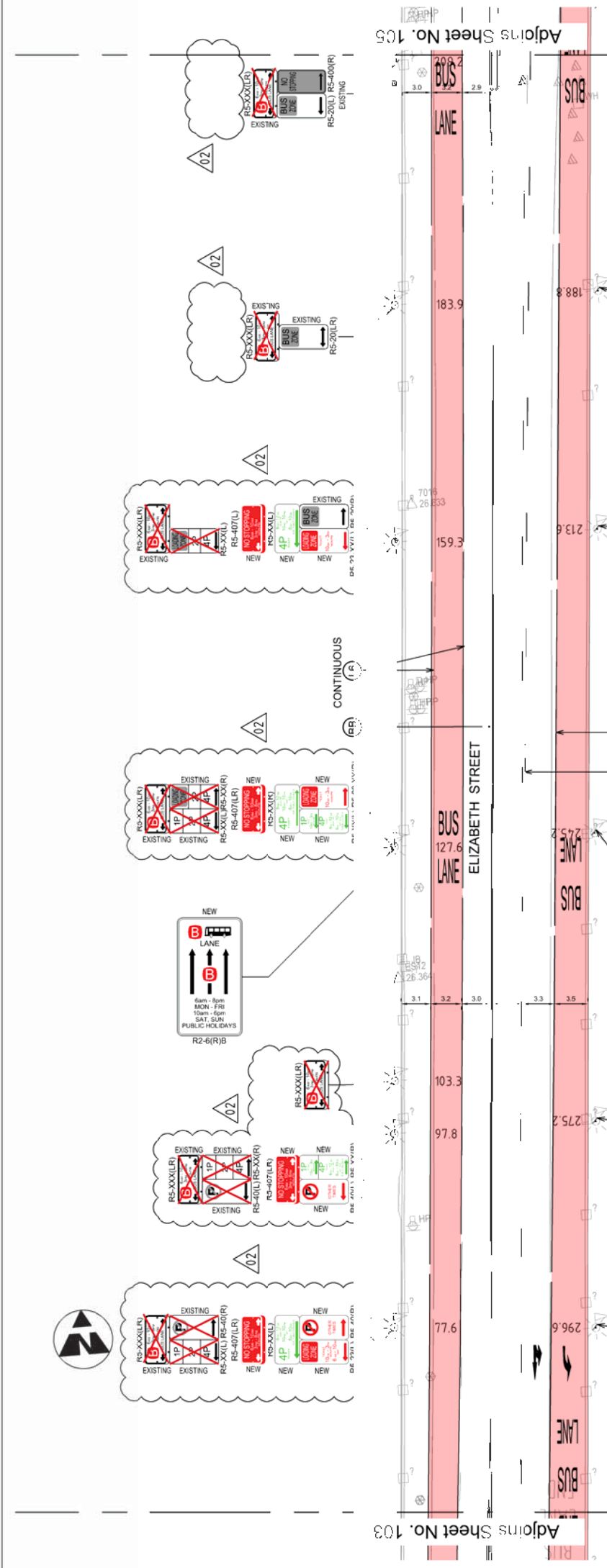
FINANCIAL

The SCCBP is being fully funded by the NSW State Government.

ATTACHMENTS

Item for Committee Information – Traffic Treatment – Elizabeth Street from Liverpool Street to Bathurst Street Sydney

Stephen Sherwin, Project Manager – Roads and Maritime Services



NOTES

- RED COLOURED 'BUS LANE' PAVEMENT MARKING TO STOP 10 METRES IN ADVANCE OF ALL TRAFFIC SIGNAL STOP LINES.

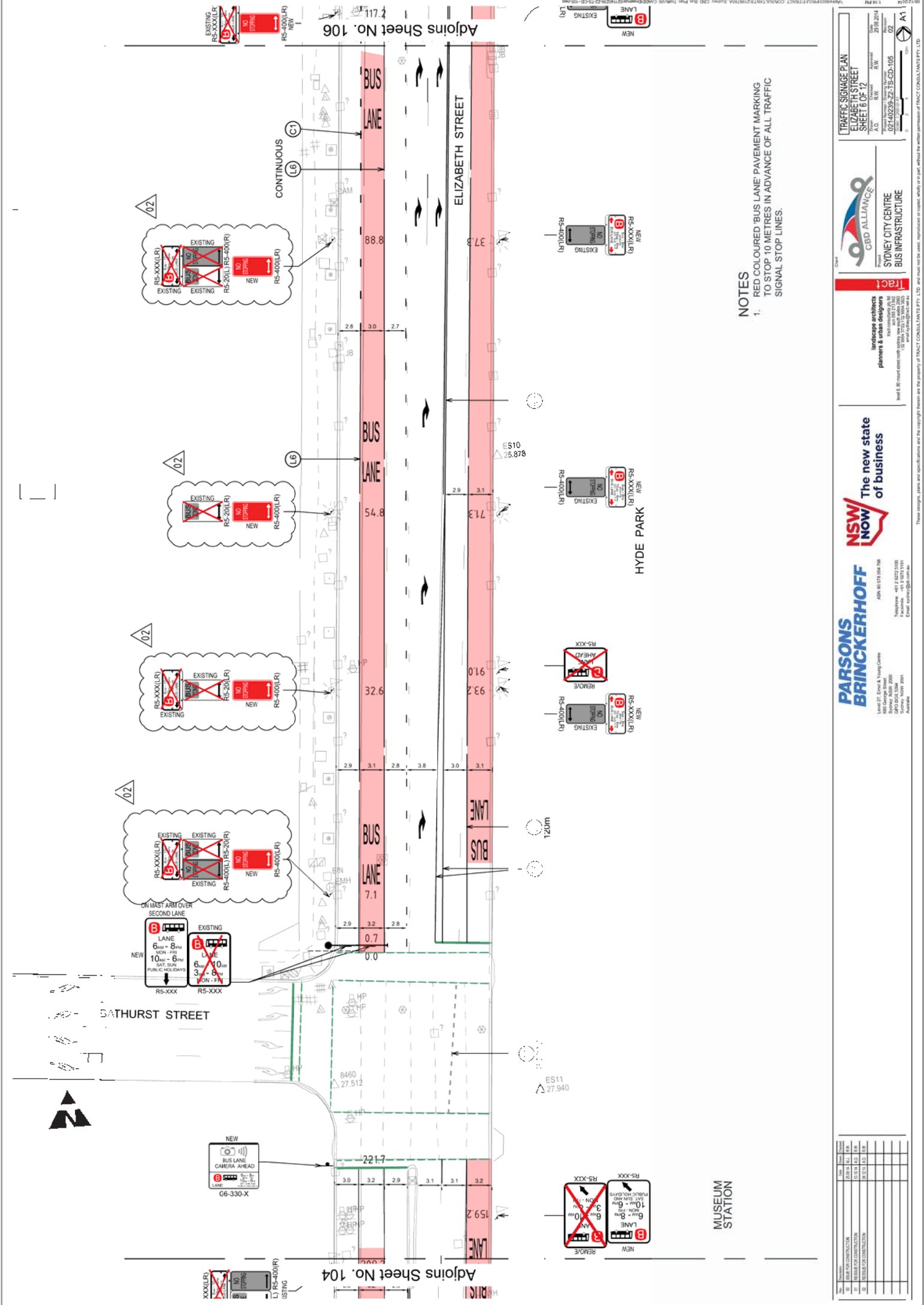
NO.	REVISION	DATE	BY	CHECKED
1	ISSUED FOR CONSTRUCTION	28/01/14	J.R.	J.R.
2	REVISED FOR CONSTRUCTION	15/11/13	J.R.	J.R.
3	REVISED FOR CONSTRUCTION	05/11/13	J.R.	J.R.

PARSONS BRINCKERHOFF
 Level 27, Citicorp Centre
 880 George Street
 Sydney NSW 2000
 Australia
 Telephone +61 2 9222 5100
 Facsimile +61 2 9222 5100
 Email parsonsbrinckerhoff.com.au
 ABN 60 078 004 766

NSW NOW
 The new state of business

Tract
 SYDNEY CITY CENTRE
 BUS INFRASTRUCTURE

TRAFFIC SIGNAGE PLAN
 ELIZABETH STREET
 SHEET 5 OF 12
 Project No: 103/12/01/02
 A.C.C. No: 722-TS-GD-104
 Date: 28/08/2014
 Author: J.R.
 Checked: J.R.
 Drawn: J.R.
 Scale: 1:500 (2:1)



NOTES

1. RED COLOURED 'BUS LANE' PAVEMENT MARKING TO STOP 10 METRES IN ADVANCE OF ALL TRAFFIC SIGNAL STOP LINES.

TRAFFIC SIGNAGE PLAN ELIZABETH STREET SHEET 6 OF 12	
Project No: 15/000001 Date: 28/08/2014	A.D. R.W. 15/000001/22-TS-GD-105 1:100 (A1)
SYDNEY CITY CENTRE BUS INFRASTRUCTURE	
landscape architects planners & engineers 15/000001/22-TS-GD-105 15/000001/22-TS-GD-105 15/000001/22-TS-GD-105	
PARSONS BRINCKERHOFF Level 27, Citicorp Centre 888 George Street Sydney NSW 2000 Telephone: +61 2 9222 5100 Facsimile: +61 2 9222 5101 Email: parsons@parsons.com.au	
NSW NOW The new state of business	
TRAFFIC SIGNAGE PLAN ELIZABETH STREET SHEET 6 OF 12	